

# \$389,000 - 2031 Hammond Cl, Edmonton

MLS® #E4425336

**\$389,000**

3 Bedroom, 2.50 Bathroom, 1,273 sqft  
Single Family on 0.00 Acres

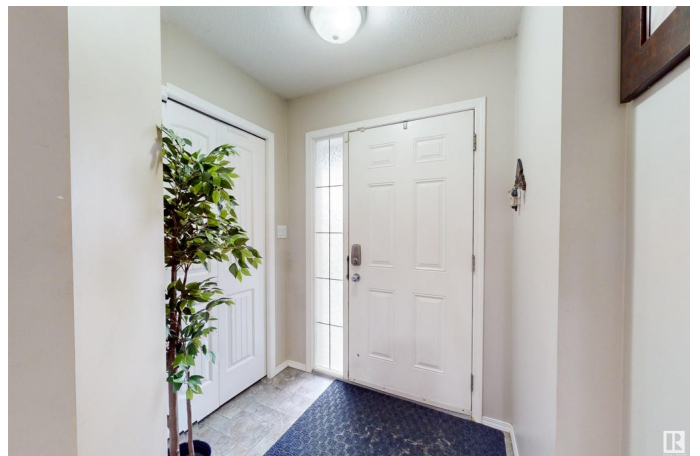
The Hamptons, Edmonton, AB

Welcome to The Hamptons, where this architecturally designed 2-storey half duplex is perfectly crafted for family living. Nestled on an exceptionally large pie-shaped lot with a massive backyard, this home exudes comfort, charm, and bright, airy vibes throughout. The main floor showcases a spacious, light-filled kitchen, a welcoming dining area, and a cozy living room—all thoughtfully designed and tied together with elegant flooring. Upstairs, you'll find three generously sized bedrooms, including a serene primary suite with a walk-in closet and a private 4-piece ensuite, complemented by an additional 4-piece family bathroom. The unfinished basement includes a large laundry area. Step outside to enjoy summer evenings on the deck, surrounded by a beautifully landscaped and fenced yard, offering ample space for relaxation or entertaining. With a single attached garage, extra driveway parking, this home delivers the perfect blend of space, style, and convenience.

Built in 2008

## Essential Information

MLS® #	E4425336
Price	\$389,000
Bedrooms	3



Bathrooms	2.50
Full Baths	2
Half Baths	1
Square Footage	1,273
Acres	0.00
Year Built	2008
Type	Single Family
Sub-Type	Half Duplex
Style	2 Storey
Status	Active

### **Community Information**

Address	2031 Hammond Cl
Area	Edmonton
Subdivision	The Hamptons
City	Edmonton
County	ALBERTA
Province	AB
Postal Code	T6M 0K2

### **Amenities**

Amenities	Deck, Detectors Smoke, No Animal Home, No Smoking Home
Parking	Single Garage Attached

### **Interior**

Interior Features	ensuite bathroom
Appliances	Dishwasher-Built-In, Dryer, Microwave Hood Fan, Refrigerator, Stove-Electric, Washer, Window Coverings
Heating	Forced Air-1, Natural Gas
Fireplace	Yes
Fireplaces	Glass Door
Stories	2
Has Basement	Yes
Basement	Full, Unfinished

### **Exterior**

Exterior	Wood, Vinyl
Exterior Features	Fenced, Golf Nearby, Landscaped, Public Transportation, Schools, Shopping Nearby, Treed Lot

Roof	Asphalt Shingles
Construction	Wood, Vinyl
Foundation	Concrete Perimeter

### **School Information**

Elementary	Bessie Nichols School
Middle	Ellerslie Campus School
High	Jasper Place School

### **Additional Information**

Date Listed	March 12th, 2025
Days on Market	2
Zoning	Zone 58

DATA IS DEEMED RELIABLE BUT IS NOT GUARANTEED ACCURATE BY THE REALTORS® ASSOCIATION OF EDMONTON. COPYRIGHT 2025 BY THE REALTORS® ASSOCIATION OF EDMONTON. ALL RIGHTS RESERVED. Trademarks are owned or controlled by the Canadian Real Estate Association (CREA) and identify real estate professionals who are members of CREA (REALTOR®, REALTORS®) and/or the quality of services they provide (MLS®, Multiple Listing Service®)

Listing information last updated on March 14th, 2025 at 5:47am MDT