

Courtesy Of Kimberly Phillips Of Rimrock Real Estate

\$589,000 - 7703 182 Street, Edmonton

MLS® #E4424346

\$589,000

4 Bedroom, 3.50 Bathroom, 1,780 sqft
Single Family on 0.00 Acres

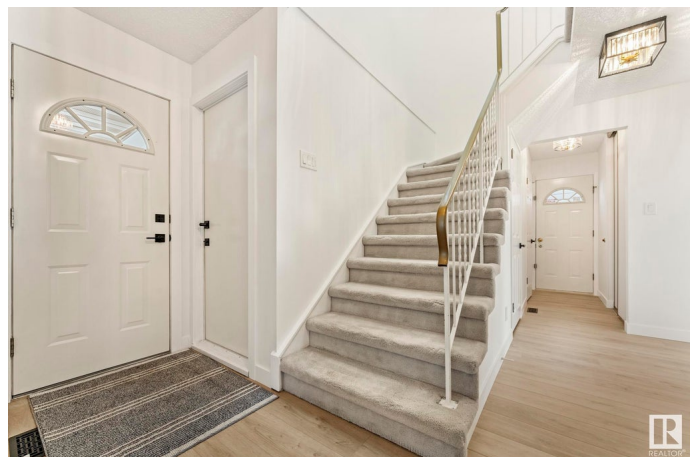
Lymburn, Edmonton, AB

Welcome to this beautifully REMODELLED home in the heart of Lymburn offering MODERN finishes, SPACIOUS living, and a PRIME location! With 4 bedrooms upstairs and an additional flex room in the basement, this home is perfect for growing families or those who love to entertain! Step inside to discover brand new VINYL PLANK flooring, fresh paint, and stylish new lighting. The fully renovated kitchen features new STAINLESS STEEL appliances, sleek cabinetry, and beautiful QUARTZ countertops. All of the bathrooms have been redone adding to the home's contemporary feel. The fully finished basement offers additional living space with a WET BAR, making it perfect for entertaining or as a private retreat. Enjoy the SPACIOUS backyard perfect for family BBQs!! This home also comes with an oversized DOUBLE ATTACHED GARAGE that provides ample parking and storage!

Built in 1977

Essential Information

MLS® #	E4424346
Price	\$589,000
Bedrooms	4
Bathrooms	3.50
Full Baths	3



Half Baths	1
Square Footage	1,780
Acres	0.00
Year Built	1977
Type	Single Family
Sub-Type	Detached Single Family
Style	2 Storey
Status	Active

Community Information

Address	7703 182 Street
Area	Edmonton
Subdivision	Lymburn
City	Edmonton
County	ALBERTA
Province	AB
Postal Code	T5T 1Z6

Amenities

Amenities	On Street Parking, Deck, No Animal Home, No Smoking Home, Vinyl Windows, Wet Bar, See Remarks
Parking Spaces	4
Parking	Double Garage Attached

Interior

Interior Features	ensuite bathroom
Appliances	Dishwasher-Built-In, Dryer, Garage Control, Garage Opener, Hood Fan, Refrigerator, Stove-Electric, Washer
Heating	Forced Air-1, Natural Gas
Fireplace	Yes
Fireplaces	Brick Facing
Stories	3
Has Basement	Yes
Basement	Full, Finished

Exterior

Exterior	Wood, Brick
Exterior Features	Fenced, Landscaped, Playground Nearby, Public Transportation, Schools, See Remarks

Roof	Asphalt Shingles
Construction	Wood, Brick
Foundation	Concrete Perimeter

School Information

Elementary	Lymburn School
Middle	Vernon Barfield
High	Hillcrest School

Additional Information

Date Listed	March 6th, 2025
Days on Market	9
Zoning	Zone 20

DATA IS DEEMED RELIABLE BUT IS NOT GUARANTEED ACCURATE BY THE REALTORS® ASSOCIATION OF EDMONTON. COPYRIGHT 2025 BY THE REALTORS® ASSOCIATION OF EDMONTON. ALL RIGHTS RESERVED. Trademarks are owned or controlled by the Canadian Real Estate Association (CREA) and identify real estate professionals who are members of CREA (REALTOR®, REALTORS®) and/or the quality of services they provide (MLS®, Multiple Listing Service®)

Listing information last updated on March 15th, 2025 at 3:47am MDT