

\$194,800 - 421 Willow Court, Edmonton

MLS® #E4424345

\$194,800

2 Bedroom, 1.00 Bathroom, 1,166 sqft

Condo / Townhouse on 0.00 Acres

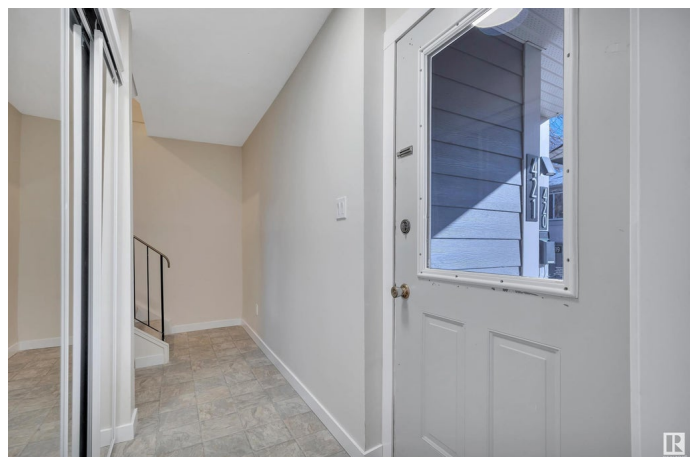
Lymburn, Edmonton, AB

Great 2 bedroom townhouse in a wonderful complex close to all amenities. There has been loads of upgrades like, beautiful new bathroom, with ceramic gloss tile surround, new tub/shower, new faucets and vinyl plank flooring. New lights throughout, new doors, hardware, new carpet, baseboards. The kitchen has newer Stainless Steel appliances, and under warranty, new kitchen faucet, new hardware. All windows have Zebra blinds installed. Easy access to Whitemud Dr and Anthony Henday, close to West Edmonton Mall, Misericordia Hospital, Walking distance to Schools, shopping, restaurants, Jamie Plats Family YMCA.

Built in 1977

Essential Information

MLS® #	E4424345
Price	\$194,800
Bedrooms	2
Bathrooms	1.00
Full Baths	1
Square Footage	1,166
Acres	0.00
Year Built	1977
Type	Condo / Townhouse
Sub-Type	Townhouse



Style 2 Storey
Status Active

Community Information

Address 421 Willow Court
Area Edmonton
Subdivision Lymburn
City Edmonton
County ALBERTA
Province AB
Postal Code T5T 2K7

Amenities

Amenities Detectors Smoke, Parking-Visitor
Parking Spaces 1
Parking Stall

Interior

Appliances Dryer, Hood Fan, Refrigerator, Stove-Electric, Washer, Window Coverings, See Remarks
Heating Forced Air-1, Natural Gas
Stories 2
Has Basement Yes
Basement Partial, Partially Finished

Exterior

Exterior Wood, Stucco, Hardie Board Siding
Exterior Features Playground Nearby, Public Swimming Pool, Public Transportation, Schools, Shopping Nearby
Roof Asphalt Shingles
Construction Wood, Stucco, Hardie Board Siding
Foundation Concrete Perimeter

Additional Information

Date Listed March 6th, 2025
Days on Market 8
Zoning Zone 20
Condo Fee \$381

RESERVED. Trademarks are owned or controlled by the Canadian Real Estate Association (CREA) and identify real estate professionals who are members of CREA (REALTOR®®, REALTORS®®) and/or the quality of services they provide (MLS®®, Multiple Listing Service®®)

Listing information last updated on March 14th, 2025 at 8:02am MDT