

Courtesy Of Jeff D Jackson Of Bode

# \$629,900 - 653 Kinglet Boulevard, Edmonton

MLS® #E4417239

**\$629,900**

3 Bedroom, 2.50 Bathroom, 2,300 sqft

Single Family on 0.00 Acres

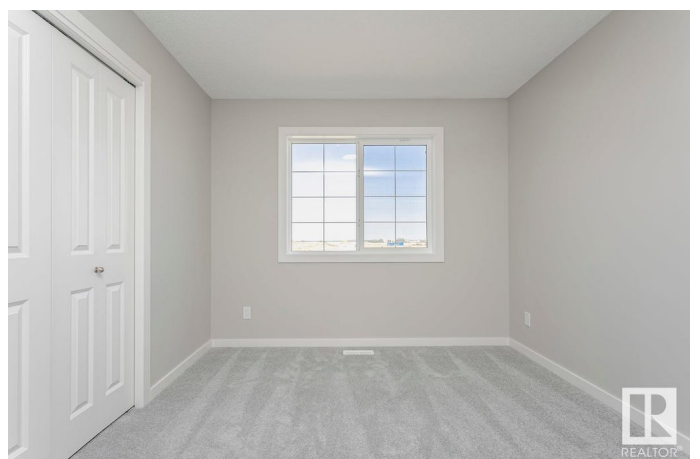
Kinglet Gardens, Edmonton, AB

Located in the beautiful community of Kinglet by Big Lake. This stunning home is situated on a walking path lot offering additional side windows with added privacy. An open-concept layout with an impressive open-to-above foyer, a walk-through mudroom, and a central kitchen with upgraded quartz countertops and a large island. The spacious great room featuring a fire and ice fireplace and dining area make entertaining a breeze. Upstairs features a central bonus room with window, two bedrooms, a full bath, and a walk through laundry room. The bridge over the foyer leads to the primary bedroom featuring a private sitting area, 5 piece ensuite and a walk-through closet connected to the laundry room. Added separate entrance leads to the basement with upgraded 9' ceilings, bathroom rough in and 2 windows for potential future development. Photos are representative. Metal railing on main and second floor, soft close cabinetry

Built in 2024

## Essential Information

MLS® #	E4417239
Price	\$629,900
Bedrooms	3
Bathrooms	2.50



Full Baths	2
Half Baths	1
Square Footage	2,300
Acres	0.00
Year Built	2024
Type	Single Family
Sub-Type	Detached Single Family
Style	2 Storey
Status	Active

### **Community Information**

Address	653 Kinglet Boulevard
Area	Edmonton
Subdivision	Kinglet Gardens
City	Edmonton
County	ALBERTA
Province	AB
Postal Code	T5S 2B9

### **Amenities**

Amenities	Ceiling 9 ft., No Animal Home, No Smoking Home
Parking Spaces	4
Parking	Double Garage Attached

### **Interior**

Interior Features	ensuite bathroom
Appliances	None
Heating	Forced Air-1, Natural Gas
Fireplace	Yes
Fireplaces	Insert
Stories	2
Has Basement	Yes
Basement	Full, Unfinished

### **Exterior**

Exterior	Wood, Fiber Cement, Vinyl
Exterior Features	Golf Nearby, Park/Reserve, Playground Nearby, Public Transportation, Schools, Shopping Nearby
Roof	Asphalt Shingles

Construction Wood, Fiber Cement, Vinyl  
Foundation Concrete Perimeter

### **Additional Information**

Date Listed January 7th, 2025  
Days on Market 66  
Zoning Zone 59

DATA IS DEEMED RELIABLE BUT IS NOT GUARANTEED ACCURATE BY THE REALTORS® ASSOCIATION OF EDMONTON. COPYRIGHT 2025 BY THE REALTORS® ASSOCIATION OF EDMONTON. ALL RIGHTS RESERVED. Trademarks are owned or controlled by the Canadian Real Estate Association (CREA) and identify real estate professionals who are members of CREA (REALTOR®, REALTORS®) and/or the quality of services they provide (MLS®, Multiple Listing Service®)

Listing information last updated on March 14th, 2025 at 12:17pm MDT