

# \$529,998 - 9708 Carson Place, Edmonton

MLS® #E4415521

**\$529,998**

3 Bedroom, 2.50 Bathroom, 1,553 sqft  
Single Family on 0.00 Acres

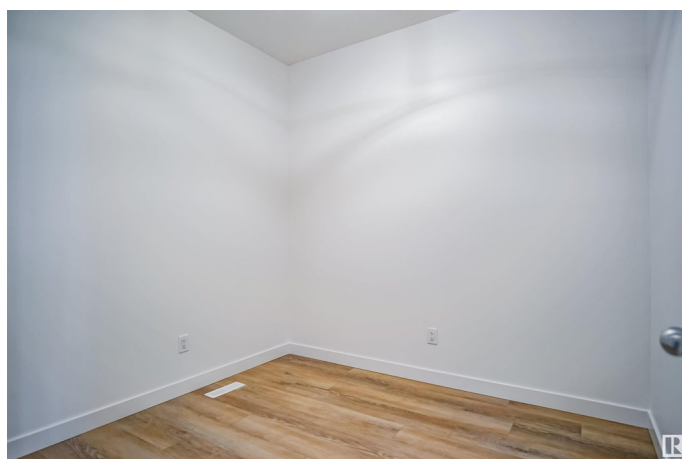
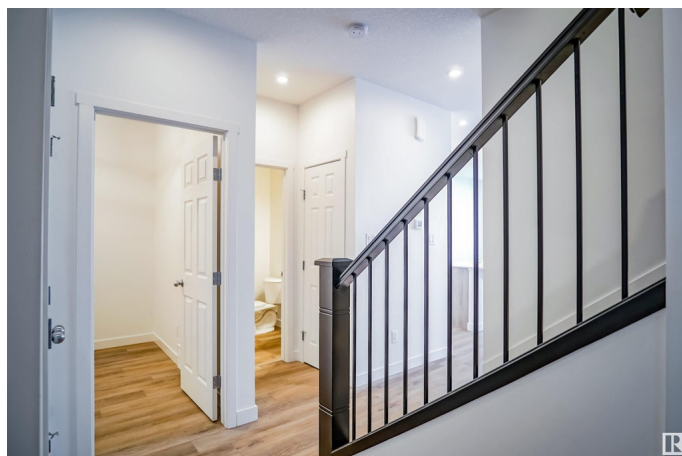
Chappelle Area, Edmonton, AB

Welcome to the "Sampson" built by the award-winning builder Pacesetter homes and is located in the heart of Creekwood Chappelle and just steps to the neighborhood park and schools. As you enter the home you are greeted by luxury vinyl plank flooring throughout the great room, kitchen, and the breakfast nook. Your large kitchen features tile back splash, an island a flush eating bar, quartz counter tops and an undermount sink. Just off of the kitchen and tucked away by the front entry is a 2 piece powder room. Upstairs is the master's retreat with a large walk in closet and a 4-piece en-suite. The second level also include 2 additional bedrooms with a conveniently placed main 4-piece bathroom and a good sized bonus room. Close to all amenities and easy access to the Henday. \*\*\* This home is under construction and the photos used are from the same exact built home but colors may vary, slated to be complete this coming June of 2025 \*\*\*

Built in 2024

## Essential Information

|           |           |
|-----------|-----------|
| MLS® #    | E4415521  |
| Price     | \$529,998 |
| Bedrooms  | 3         |
| Bathrooms | 2.50      |



|                |                        |
|----------------|------------------------|
| Full Baths     | 2                      |
| Half Baths     | 1                      |
| Square Footage | 1,553                  |
| Acres          | 0.00                   |
| Year Built     | 2024                   |
| Type           | Single Family          |
| Sub-Type       | Detached Single Family |
| Style          | 2 Storey               |
| Status         | Active                 |

### **Community Information**

|             |                   |
|-------------|-------------------|
| Address     | 9708 Carson Place |
| Area        | Edmonton          |
| Subdivision | Chappelle Area    |
| City        | Edmonton          |
| County      | ALBERTA           |
| Province    | AB                |
| Postal Code | T6W 5P9           |

### **Amenities**

|           |                        |
|-----------|------------------------|
| Amenities | See Remarks            |
| Parking   | Double Garage Attached |

### **Interior**

|                   |  |
|-------------------|--|
| Interior Features | ensuite bathroom                           |
| Appliances        | Garage Control, Garage Opener, See Remarks |
| Heating           | Forced Air-1, Natural Gas                  |
| Stories           | 2  |
| Has Basement      | Yes  |
| Basement          | Full, Unfinished                           |

### **Exterior**

|                   |  |
|-------------------|--|
| Exterior          | Wood, Stone, Vinyl   |
| Exterior Features | Environmental Reserve, Golf Nearby, Park/Reserve, Playground Nearby, Public Swimming Pool, Public Transportation, Schools, Shopping Nearby, View Lake, See Remarks |
| Roof              | Asphalt Shingles   |
| Construction      | Wood, Stone, Vinyl   |
| Foundation        | Concrete Perimeter   |

## Additional Information

Date Listed            December 6th, 2024

Days on Market      98

Zoning                Zone 55

DATA IS DEEMED RELIABLE BUT IS NOT GUARANTEED ACCURATE BY THE REALTORS® ASSOCIATION OF EDMONTON. COPYRIGHT 2025 BY THE REALTORS® ASSOCIATION OF EDMONTON. ALL RIGHTS RESERVED. Trademarks are owned or controlled by the Canadian Real Estate Association (CREA) and identify real estate professionals who are members of CREA (REALTOR®, REALTORS®) and/or the quality of services they provide (MLS®, Multiple Listing Service®)

Listing information last updated on March 14th, 2025 at 8:17pm MDT